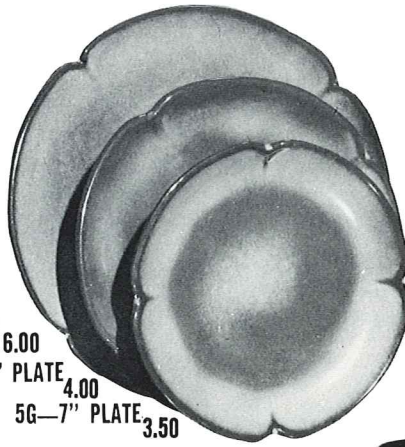




*5V—2 QT. BAKER/BEAN POT 9.25
*5V/W—BAKER/W WARMER SET 16.50



5F—10" PLATE 6.00
5FS—9" PLATE 4.00
5G—7" PLATE 3.50



*5M—16 OZ. MUG 4.50



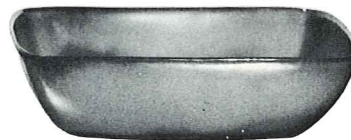
*5A—12 OZ. CREAMER 3.25



*5B—SUGAR WITH LID 5.00



*5W—3 QT. BAKER/BEAN POT 13.25
*5W/W—BAKER/W WARMER SET 20.50



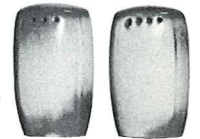
*5NS—9" VEGETABLE 4.75



*5CC—5 OZ. TEACUP 2.75



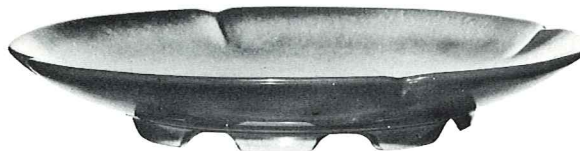
5C—CUP 3.25
5E—5 1/2" SAUCER 2.75



*5H—SALT & PEPPER 4.75



*5N—4 1/2" QT. BOWL 17.50



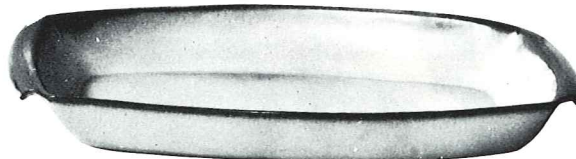
5FC—15" CHOP PLATE 25.00



*5LC—6 OZ. JUICE 3.25



*5L—12 OZ. TUMBLER 3.75



5P—17" PLATTER 17.50

*5Q—13" PLATTER 7.75



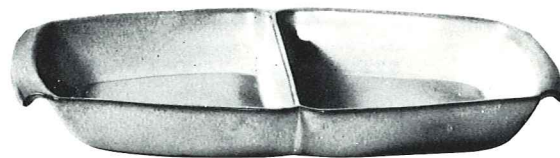
*5DB—6 OZ. SUGAR 3.25



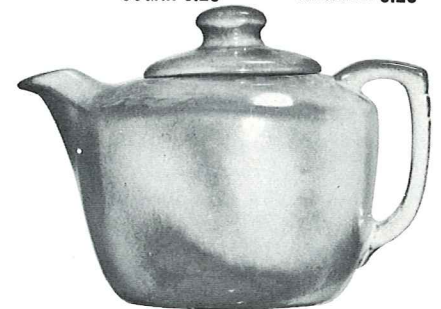
*5DA—6 OZ. CREAMER 3.25



*5XL—20 OZ. BOWL 3.75
*5X—14 OZ. CEREAL 3.25
*5XS—9 OZ. FRUIT 2.75



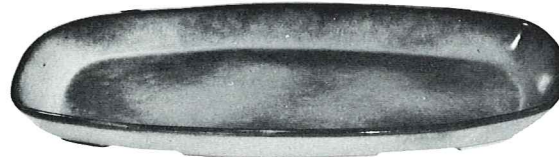
*5QD—13" DIVIDED BOWL 7.75



*5TL—12 CUP TEAPOT 13.00



*218—12" BOWL 7.75



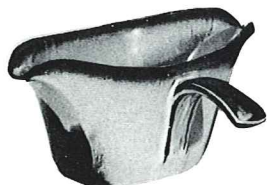
5QS—13" PLATTER 5.00

*5PS—9" TRAY 3.75

*6P—11" PLATTER 4.50



*5D—3 QT. PITCHER 12.50



*6S—TWO SPOUT GRAVY 6.50



*6T—6 CUP TEAPOT 9.25



*6J—2 CUP TEAPOT 6.50

THIS PAGE AVAILABLE IN BROWN SATIN, DESERT GOLD, PRAIRIE GREEN & AUTUMN YELLOW EXCEPT WHERE NOTED*.